

47LL

SMC  
3MC

DESIGN AWARD  
2017 ENTREE

MERLIN BAUWENS  
SARAH DE GRAAF  
ELIEN VAN STEEN  
ALEXANDRA VERMEIR

 Universiteit  
Antwerpen

# OUR PRODUCTS

BENCH



TRASH CAN



BIKE RACK



INFO BOARD



Goal = creating a comfortable contrast between old and new.

Designed for visitors of cultural and recreational areas.

Used technique = SMC

4ALL

MERLIN BAUWENS  
SARAH DE GRAAF  
ELIEN VAN STEEN  
ALEXANDRA VERMEIR

Universiteit  
Antwerpen

# BENEFITS & REQUIREMENTS

4ALL

MERLIN BAUWENS  
SARAH DE GRAAF  
ELIEN VAN STEEN  
ALEXANDRA VERMEIR



Universiteit  
Antwerpen



Modular products equal in easy (de)construction



Effortless cleaning as a result of the smooth surface + removes rain through the convex exterior



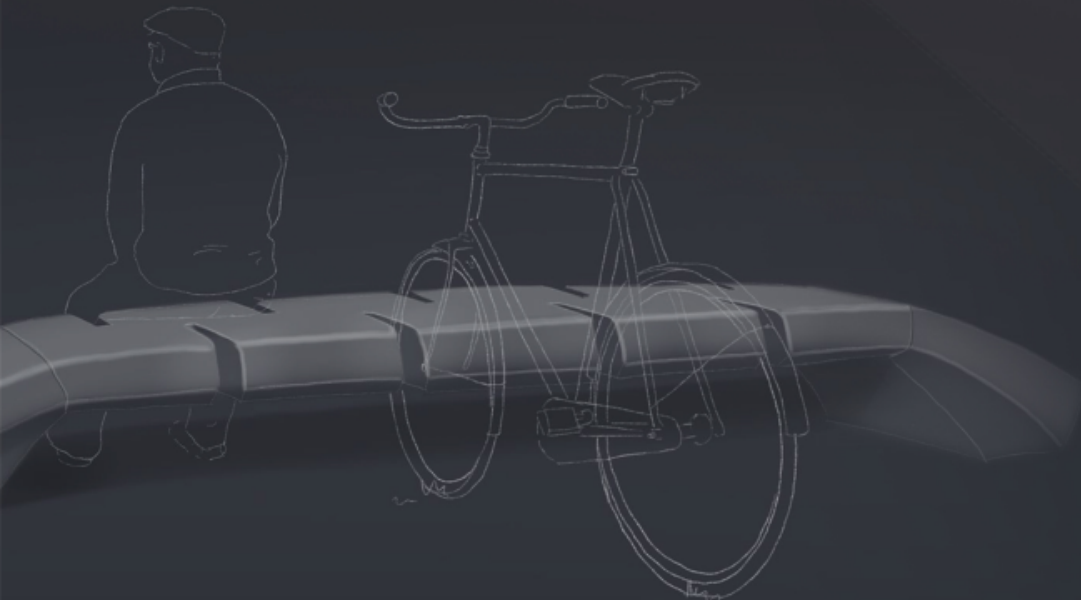
Producing parts is facilitated by the use of mirror moulds



High stability is necessary for bearing great forces



Despite the heavy weight of outdoor furniture, anti-theft anchoring is required to maintain safety against external forces like weather and crimes





# MOULDS

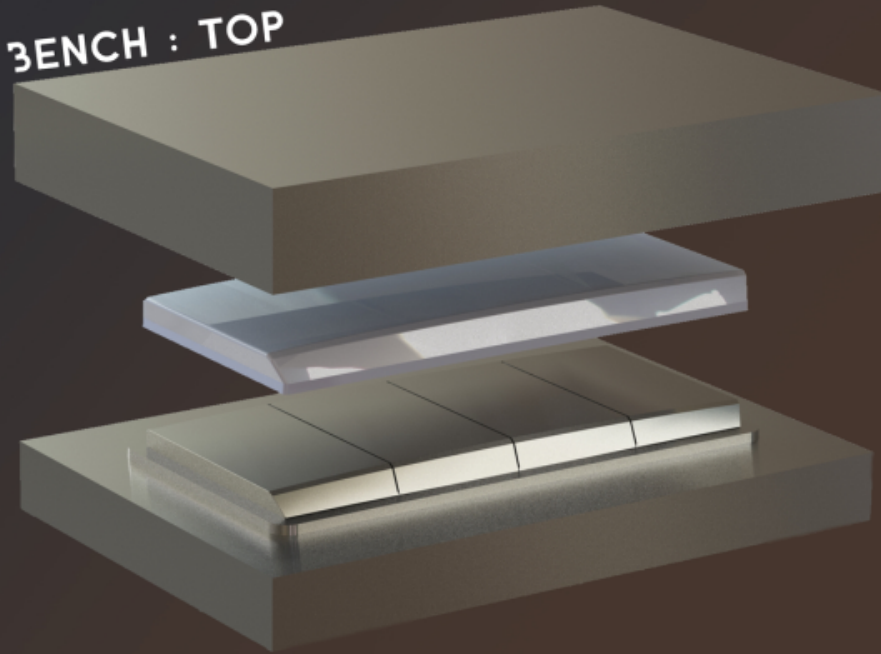
4ALL

MERLIN BAUWENS  
SARAH DE GRAAF  
ELIEN VAN STEEN  
ALEXANDRA VERMEIR

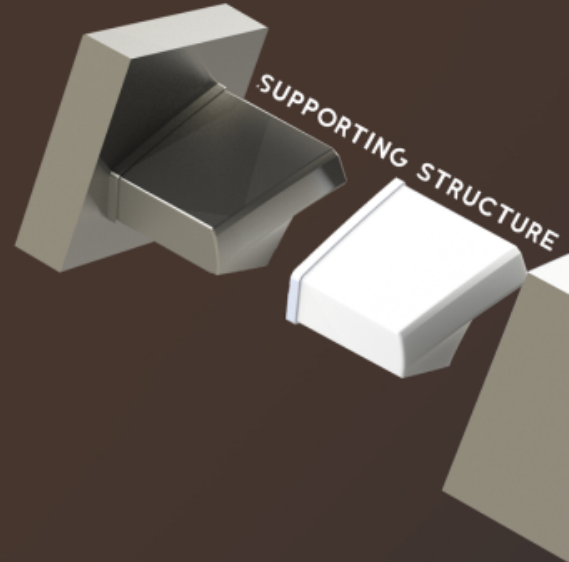


Universiteit  
Antwerpen

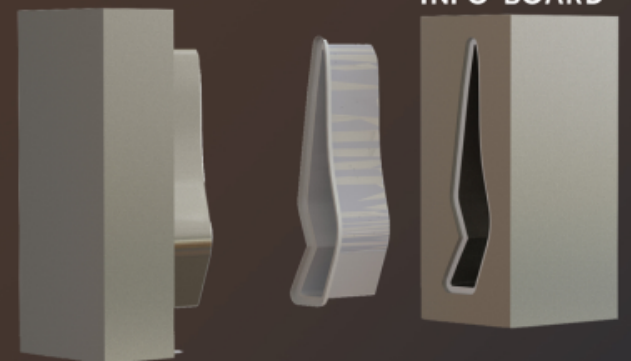
BENCH : TOP



SUPPORTING STRUCTURE

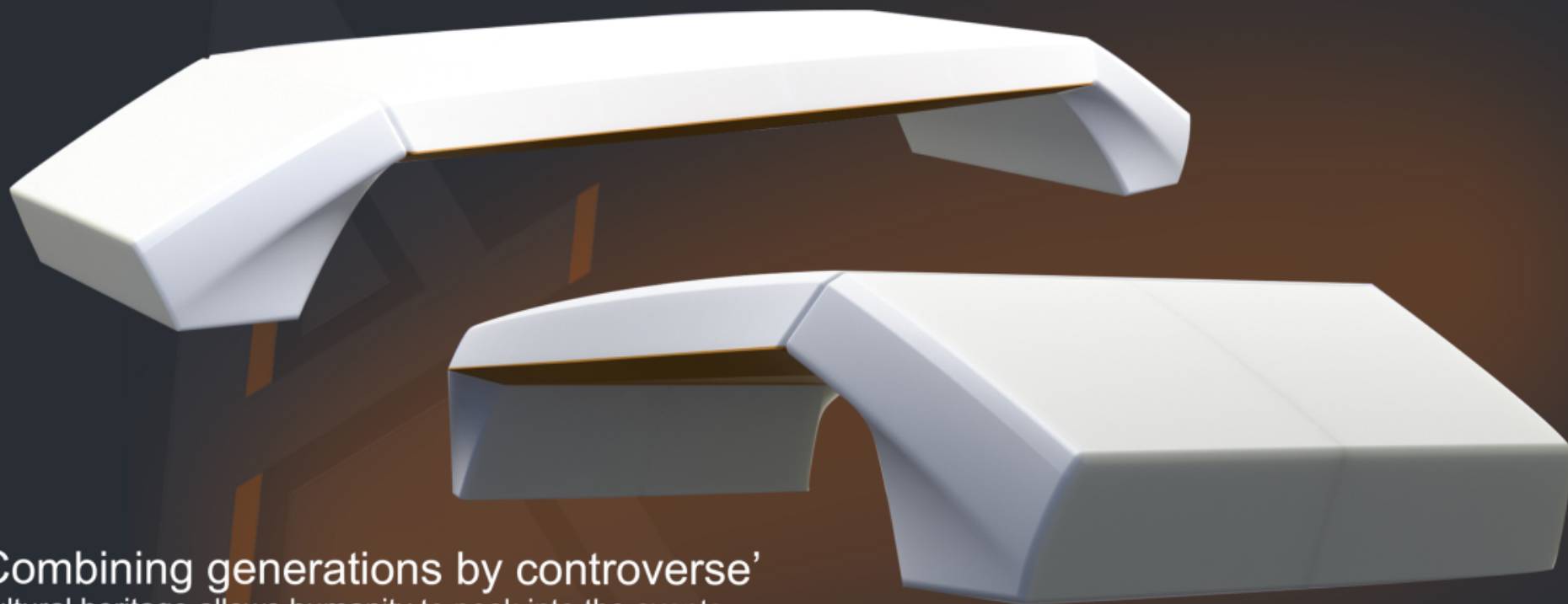


INFO BOARD



BIKE RACK : BOTTOM





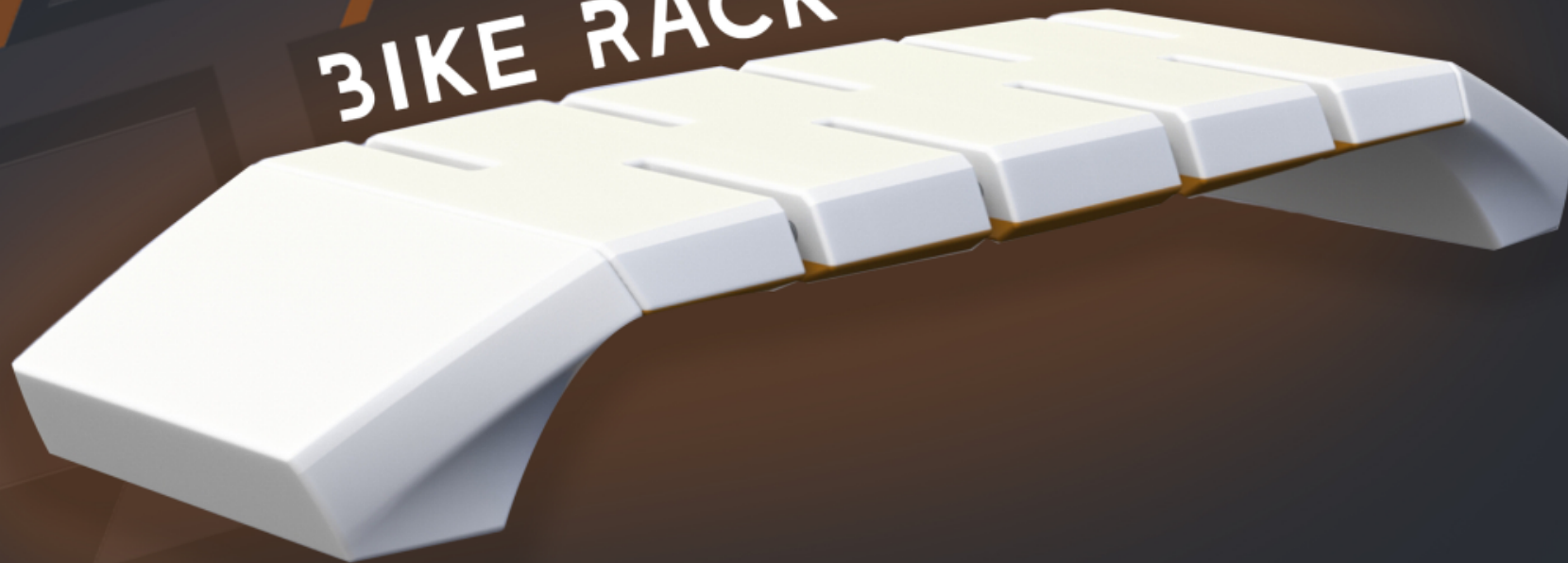
## ‘Combining generations by controversy’

Cultural heritage allows humanity to peek into the events that shaped us, that’s why we should cherish it to the fullest. By placing a modern object into an environment that carries a lot of historical baggage, we engage people to combine both worlds. Whilst most older generations are attracted to things that remind them of their childhood, newer generations explore a world of modernity. By placing a bench shaped in a different style than the monument or architecture, we support being in historical environments without losing a grip of modern culture. Thus, we intertwine both worlds and all generations. The bench is designed modular so it fits anyone’s preference. This means the supporting structures can be changed into trash cans on both sides if preferred.

# BENCH

**'A bike rack to connect people'**  
Nowadays, bike racks across the city only contain one function, storing bikes. With our concept, we try to look further than the main goal by combining bike storage with a social environment. Along with the added bench function, we tried to support social behaviour by placing the bike recesses across each other. In this way, people have to look at each other whilst storing their bikes. We made our products modular so they can be how preferred. The two supporting bottom constructions for instance, can be changed into trash cans if wanted.

## BIKE RACK





## 'Design green for all'

The existing trash cans throughout the city do the job but lack some sympathy. How do you keep people with physical issues motivated to be green and throw trash in the designated products when they have a hard time reaching for them? With our concept, users lower to the ground like children or wheelchair patients can easily throw their waste away. To subtain people higher from the ground from bending, the product is made in a way so that when a person puts pressure with their foot on the lower part, the bin entrance moves up. In this way, gravity does the job without users having to raise their arm. The trash cans can stand individually aswell as being added as a supporting base for the bench or bike rack.



4ALL

MERLIN BAUWENS  
SARAH DE GRAAF  
ELIEN VAN STEEN  
ALEXANDRA VERMEIR

Universiteit  
Antwerpen

'A new way to inspire'  
Information boards are usually placed on their own in interesting areas. Whether the board contains information about a historical event or it leads hikers through the wilderness, they're still too often located alone. With our concept, we try to get past the 'one function thinking' and designed a board that fits perfectly behind our trash can. In this way, passerby who want to throw their debris away, will be interested in interacting with the board as well.

# INFORMATION BOARD

## Fort 4

U bent hier

### Geschiedenis

Niet zoals de andere bouwwerken werd Fort 4 gebouwd in twee etappen. Het eerste deel van de vesting werd in 1811 voltooid. Het tweede deel werd in 1812 voltooid. Het fort werd gebouwd op een heuvel. Het fort werd gebouwd op een heuvel. Het fort werd gebouwd op een heuvel.

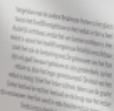
Fort 4 is een van de meest interessante bouwwerken van de 19e eeuw. Het fort werd gebouwd op een heuvel. Het fort werd gebouwd op een heuvel. Het fort werd gebouwd op een heuvel.

## Fort 4

U bent hier

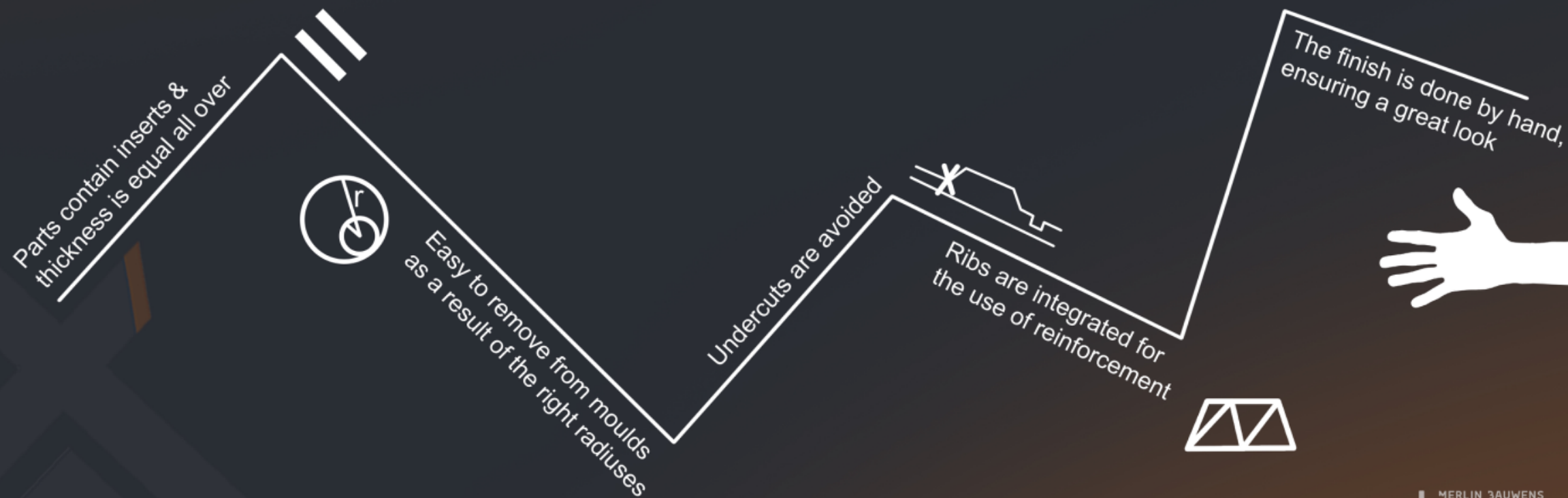
### Geschiedenis

Niet zoals de andere bouwwerken werd Fort 4 gebouwd in twee etappen. Het eerste deel van de vesting werd in 1811 voltooid. Het tweede deel werd in 1812 voltooid. Het fort werd gebouwd op een heuvel. Het fort werd gebouwd op een heuvel.





# DESIGN RULES SMC VS PRODUCTION OF PARTS



# PLACE ON THE MARKET



A modular construction makes that the products can be placed individually as well as combined. This forms an attractive factor for the market.



In Belgium alone, there are about 100.000 historical heritage areas which makes the target audience sizable throughout the entire world.



Thanks to the timeless design, the products can be placed and used universally.

